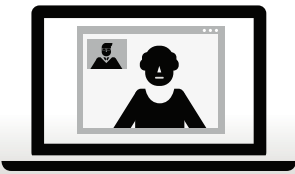


# Telestroke

**Genentech**  
A Member of the Roche Group

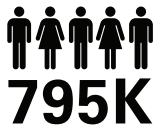
Going the Distance to Improve Access to Stroke Care

## WHAT IS TELESTROKE?



Through the use of **INTERACTIVE VIDEOCONFERENCING**, telestroke provides specialists with timely data to assist clinicians at the bedside in stroke-related decision making for patients in rural, remote or underserved areas that do not have a stroke neurologist available around the clock.

## TELESTROKE CAN HELP IMPROVE ACCESS TO SPECIALTY STROKE CARE



**795K**

Every year, approximately **795,000 PEOPLE** in the United States have a stroke



**87% OF STROKES** are acute ischemic strokes

**#5**

Stroke is the **FIFTH-LEADING CAUSE OF DEATH** and the leading cause of disability in the United States

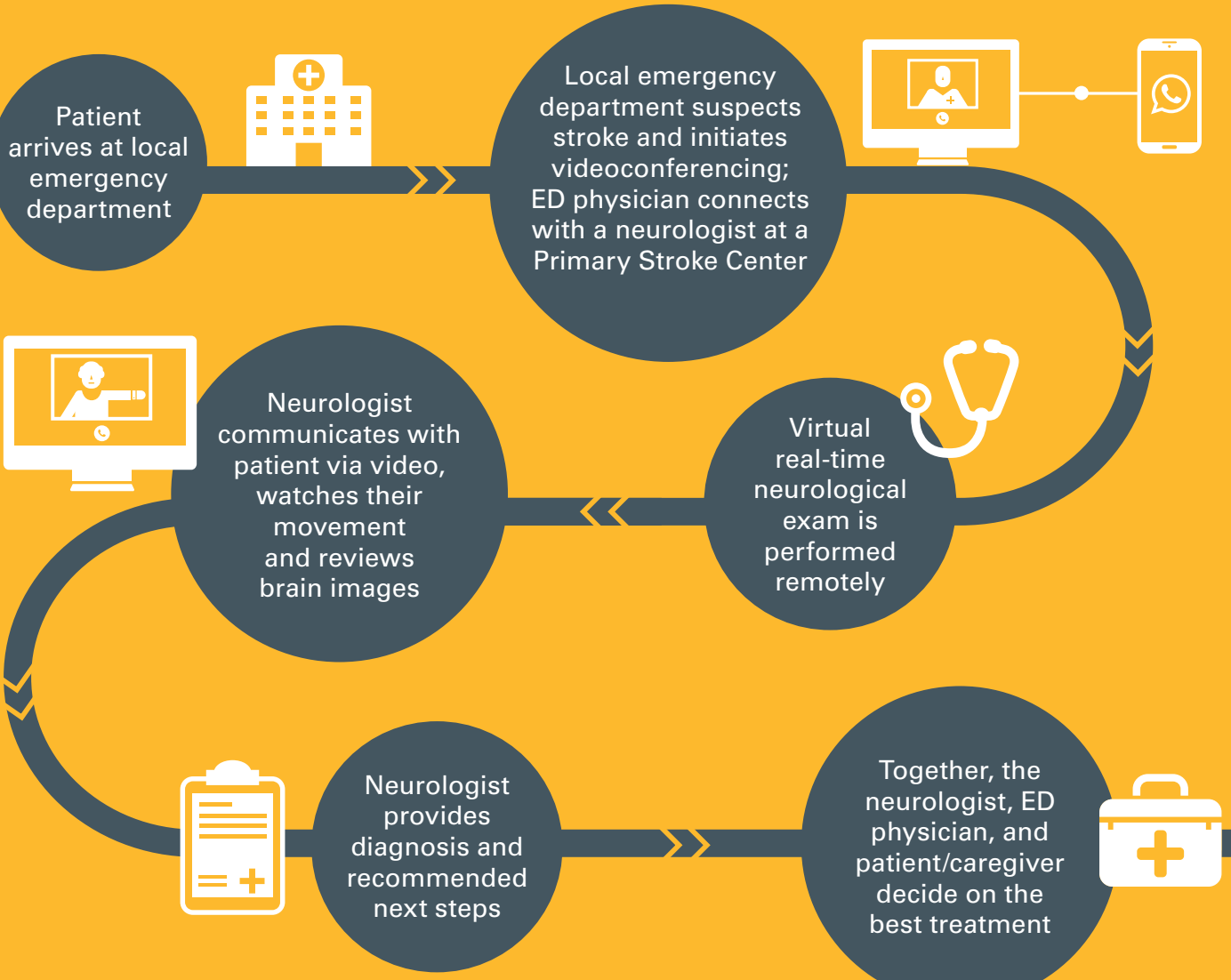


**OVER 75% OF US COUNTIES** lack a hospital with neurological services capable of treating stroke



Telestroke networks provide the potential to greatly extend **THE REACH OF STROKE SYSTEMS OF CARE** into underserved regions

## HOW TELESTROKE WORKS



## RECOGNIZE THE SIGNS

Learning the warning signs of a stroke can help save lives

**The F.A.S.T. test can be used as a quick screening tool**

### FACE

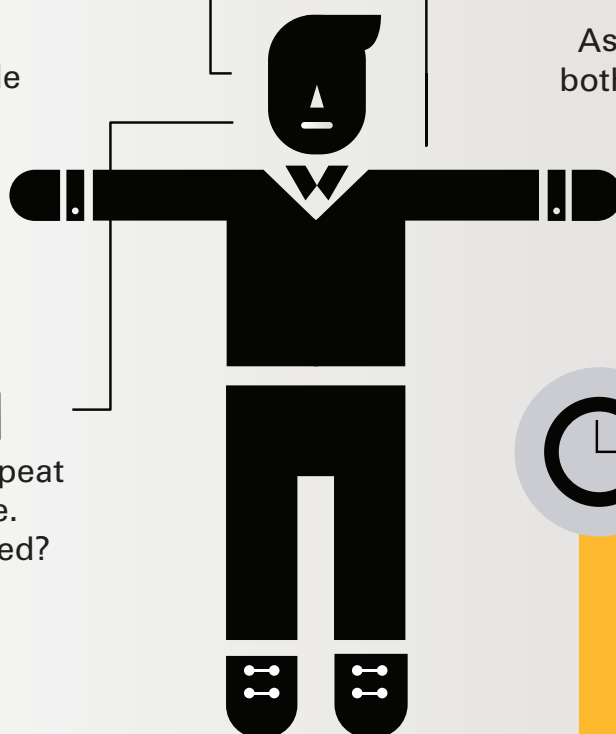
Ask the person to smile. Does one side of the face droop?

### ARMS

Ask the person to raise both arms. Does one arm drift downwards?

### SPEECH

Ask the person to repeat a simple sentence. Are the words slurred?



### TIME

If the person shows any of these symptoms, please call 911 and get to the hospital immediately

For more information, log on to **WWW.STROKEAWARENESS.COM**